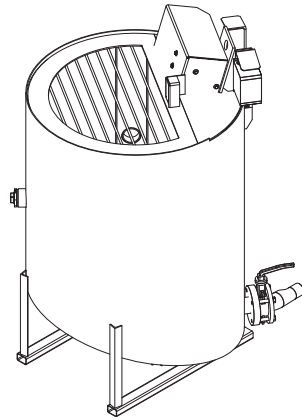
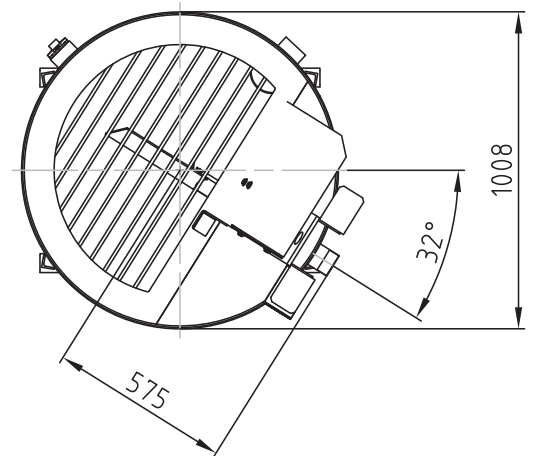
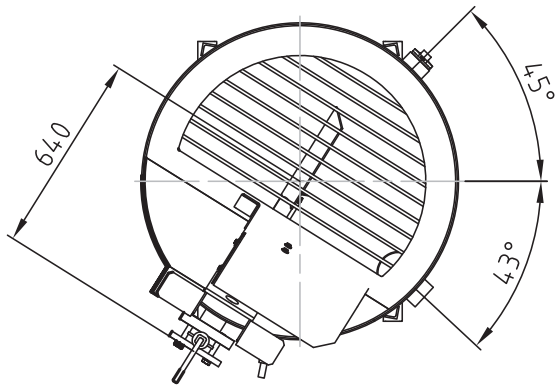
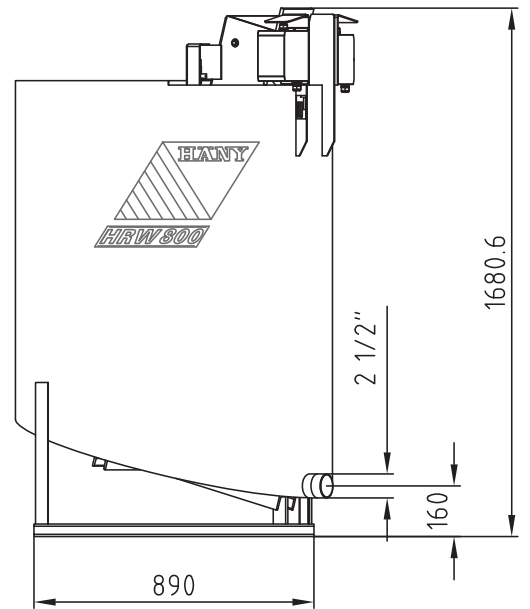
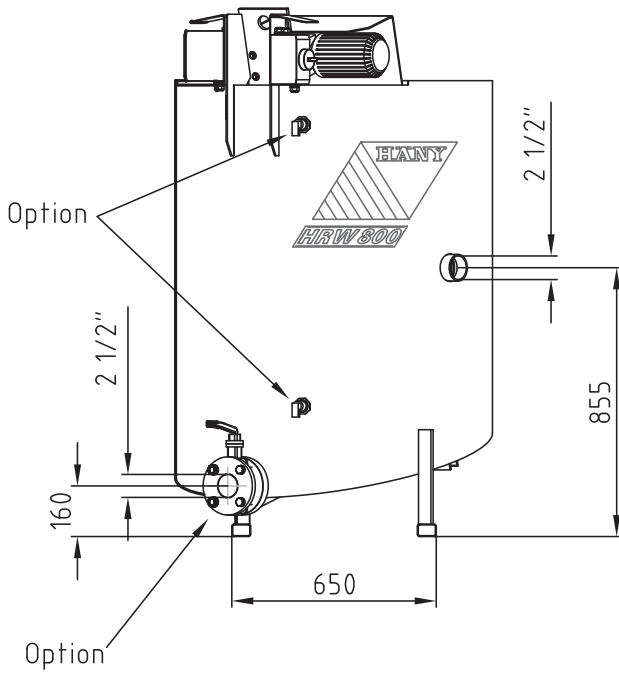


# Data sheet



## HRW 800

Usable content	l	800
Electric motor	50 Hz kW	0.55/1.1
	60 Hz kW	0.66/1.3
Agitator speed	50 Hz min <sup>-1</sup>	47
	60 Hz min <sup>-1</sup>	56
Weight	kg	230



Hány AG reserves the right to make improvements and modifications to their equipment without notice.

**GROUTING SYSTEMS**



## **AGITATOR HRW 800**

The agitator HRW 800 is used as storage tank between a batch mixer, such as the HCM, and the grout pump for continuous operation. The stirring paddle prevents the grout from settling out of suspension and removes any air bubbles from the mix. The slanting stirring paddle together with a special arrangement of the paddle blades ensure complete circulation of the tank content. A safety switch turns off the agitator whenever the tank cover is removed.

### **ACCESSORIES:**

**LEVEL PROBES 1", "FULL - EMPTY"**  
for the operation in automated plants

**GROUTING SYSTEMS**

**HÄNY**

